

PKC Substrate



TECHNICAL SPECIFICATIONS

350 – 4243 Glanford Ave., Victoria, BC Canada V8Z 4B9 Toll free 1.800.661.4978 Fax 250.744.2877 www.stressgenbioreagents.com support@stressgen.com

PKC Substrate Peptide Product #: SPK-104

Source

Synthetic PKC substrate peptide (QKRPSQRSKYL)

Related Active Kinases

Active PKC μ , product# PPK-450

Active PKC ν , product# PPK-457

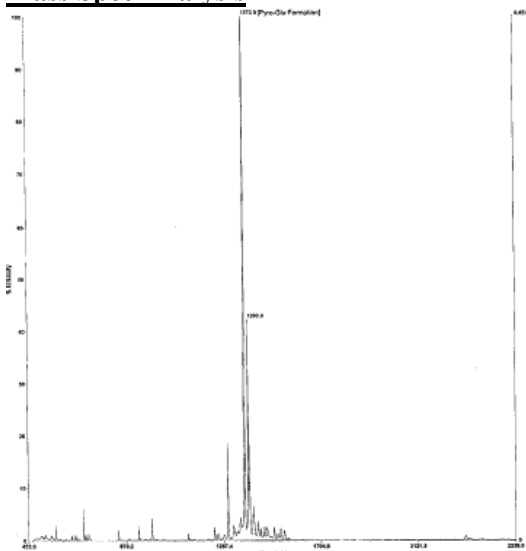
Sample Kinase Assay Protocol

- 5 μ l Active PKC μ (product# PPK-450) or Active PKC ν (product# PPK-457) (1:10 dilution)
- 5 μ l PKC substrate peptide (product# SPK-104) (1 mg/ml stock)
- 10 μ l Assay dilution buffer (20 mM MOPS, pH 7.2, 12.5 mM β -glycerophosphate, 5 mM EGTA, 2 mM EDTA, 20 mM MgCl₂, 0.25 mM DTT, 5 μ M β -methyl aspartic acid)
- 5 μ l [³²P] ATP (250 μ M stock, 166 nCi/ μ l)

Incubate all components, except [³²P] ATP, at 30^oC and then start the reaction by adding [³²P] ATP. After 15 minutes, terminate the reaction by spotting 20 μ l of the reaction mixture onto phosphocellulose P81 paper. Dry the P81 paper and then wash several times in 1% phosphoric acid prior to counting in the presence of scintillation fluid in a scintillation counter.

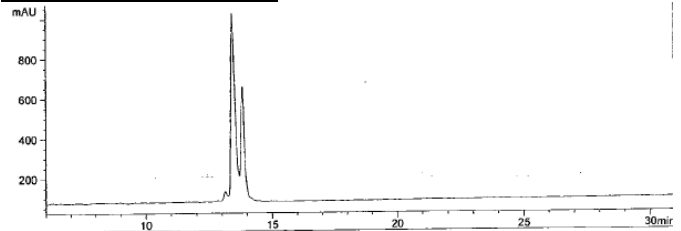
*These working dilutions are provided as suggestions only. Each user should determine the optimal conditions for their own particular experiment.

Mass Spec Analysis



Largest peak is due to formation of pyro-glutamic acid from the N-terminal residue of glutamine

HPLC Purity Analysis



Second peak is due to formation of pyro-glutamic acid from the N-terminal residue of glutamine

Rev: 10/07/04

CERTIFICATE OF ANALYSIS

PKC Substrate

Product #: SPK-104

Size: 1mg

Lot #: B410469

Format: Purified synthetic PKC substrate peptide, may contain TFA salt. This peptide is supplied as a lyophilized white powder.

Reconstitution Instructions: For a stock solution of 1 mg/ml reconstitute with 1mL of sterile kinase assay dilution buffer (20 mM MOPS, pH 7.2, 12.5 mM β -glycerophosphate, 5 mM EGTA, 2 mM EDTA, 20 mM MgCl₂, 0.25 mM DTT, 5 μ M β -methyl aspartic acid).

Purity: This peptide is \geq 95% pure as determined by HPLC analysis.

Theoretical Mass: 1390.6 Da

Mass Found: 1390.9 Da

STORAGE & SHIPPING: Store frozen product at or below -20^oC. Thawed product may be stored for 2-4 weeks at 4^oC. For optimal storage, aliquot to smaller portions and store at -20^oC. Avoid repeated freeze/thaw cycles. For maximum product recovery, after thawing, centrifuge the product vial before removing cap. Shipped on gel packs.



FOR RESEARCH USE ONLY. NOT FOR USE IN DIAGNOSTIC PROCEDURES: This product is not to be used for diagnostic nor therapeutic purposes. By accepting this product, the user confirms that it will be used for research purposes only. Stressgen warrants that its products conform to the information published by Stressgen. Purchaser must determine the suitability of the product for their particular use. Please refer to the MSDS for product safety information.