

Hsp70B' Monoclonal Antibody (165f)

Product Specifications

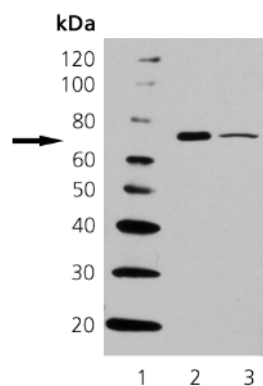
Catalog Number:	SPA-754												
Source:	Mouse												
Isotype:	IgG ₁												
Species Reactivity:	Human Other species not tested.												
Applications:	WB: 1:1000 (ECL) Other applications not tested. <i>The optimal dilution for a specific application must be determined by the investigator</i>												
Predicted M.W.:	~ 70 kDa												
Concentration:	See product label												
Purification:	Protein G Affinity												
Format:	PBS, pH 7.2, 0.09% azide, 50% glycerol												
Storage:	Store at -20°C <i>Shipping conditions may differ from the recommended storage temperature</i>												
Immunogen:	Synthetic peptide derived from sequence near the carboxy-terminus of human HSP70B' conjugated to KLH												
Related Products:	<table border="0"> <tr> <td>LYC-HL101</td> <td>HeLa Cell Lysate (Heat Shocked)</td> </tr> <tr> <td>SAB-100</td> <td>Goat anti-Mouse IgG(Fab) pAb, HRP Conjugate</td> </tr> <tr> <td>SPP-762</td> <td>Hsp70B' Recombinant Protein</td> </tr> <tr> <td>SPP-756</td> <td>Hsp70B' Recombinant Protein</td> </tr> <tr> <td>SPA-756</td> <td>Hsp70B' Polyclonal Antibody</td> </tr> <tr> <td>EKS-725</td> <td>Hsp70B prime ELISA Kit</td> </tr> </table>	LYC-HL101	HeLa Cell Lysate (Heat Shocked)	SAB-100	Goat anti-Mouse IgG(Fab) pAb, HRP Conjugate	SPP-762	Hsp70B' Recombinant Protein	SPP-756	Hsp70B' Recombinant Protein	SPA-756	Hsp70B' Polyclonal Antibody	EKS-725	Hsp70B prime ELISA Kit
LYC-HL101	HeLa Cell Lysate (Heat Shocked)												
SAB-100	Goat anti-Mouse IgG(Fab) pAb, HRP Conjugate												
SPP-762	Hsp70B' Recombinant Protein												
SPP-756	Hsp70B' Recombinant Protein												
SPA-756	Hsp70B' Polyclonal Antibody												
EKS-725	Hsp70B prime ELISA Kit												

Background:

Cells from many organisms increase their expression of a class of proteins known as heat shock or stress proteins in response to adverse changes in their environment. The Hsp70 family of stress proteins includes a group of ~70 kDa highly conserved, ubiquitous proteins located within different intracellular compartments, and involved in cellular processes such as protein trafficking, folding, and prevention of aggregation. Hsp70B' is a variant of Hsp70 that originates from a separate gene, producing a protein more basic and with different stress-induction characteristics than Hsp70. The Hsp70B' gene shares 77% identity to Hsp70, and 70% identity to the constitutively expressed Hsc70¹. Unlike Hsp70 which shows basal levels of expression and is induced by heat and various stressors, Hsp70B' is strictly heat-inducible and shows no basal level expression^{2,3}.

References:

1. Leung, T.K.C., *et al.* (1990) *Biochem J.* **267**, 125-132.
2. Leung, T.K.C., *et al.* (1992) *Genomics* **12**, 74-79.
3. Tavaría, M., *et al.* (1996) *Cell Stress & Chaperones* **1**, 23-28.



Western Blot Analysis: Lane 1: MWM,
Lane 2: Hsp70B' Recombinant Protein,
Lane 3: HeLa Cell Lysate (Heat Shocked)

FOR RESEARCH USE ONLY; NOT FOR THERAPEUTIC OR DIAGNOSTIC USE

5777 Hines Drive • Ann Arbor, MI • 48108 | Tel: 800-833-8651 or 800-668-6113 | Fax: 734-668-2793
www.assaydesigns.com | orders@assaydesigns.com | technical@assaydesigns.com