

Mouse IgG_{2b(κ)} Isotype Control, PE Conjugate

Product Specifications

Catalog Number:	SAB-602PE
Source:	Mouse
Isotype:	IgG _{2b(κ)}
Applications:	Flow: 10 µg/mL Other applications not tested. <i>The optimal dilution for a specific application must be determined by the investigator</i>
Concentration:	See product label
Purification:	Protein A Affinity
Format:	PBS, pH 7.2, 0.09% azide
Storage:	Store at 4°C <i>Shipping conditions may differ from the recommended storage temperature</i>

Related Products:

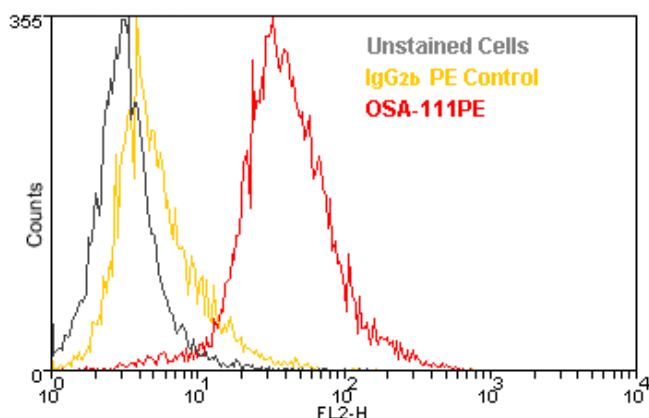
NEW!	SAB-600PE	Mouse IgG ₁ Isotype Control, PE Conjugate
NEW!	SAB-600-488	Mouse IgG ₁ Isotype Control, DyLight 488™ Conjugate
NEW!	SAB-601PE	Mouse IgG _{2a} Isotype Control, PE Conjugate
NEW!	SAB-601-488	Mouse IgG _{2a} Isotype Control, DyLight 488™ Conjugate
NEW!	SAB-602-488	Mouse IgG _{2b(κ)} Isotype Control, DyLight 488™ Conjugate

Background:

Isotype matched controls are useful in flow cytometry to determine a gross estimate of non-specific binding that may be observed with a specific antibody of interest¹. In general, an isotype control should be of the same species and isotype as the antibody of interest, used at the same concentration, and conjugated to the same fluorophore. This reagent is an IgG_{2b(κ)} isotype mouse monoclonal antibody (Clone #MPC-11) conjugated to phycoerythrin (PE). It is intended for use as an isotype control antibody for flow cytometry.

Reference:

1. O'Gorman, M.R.G. and Thomas, J. (1999) Cytometry **38**, 78-80.



Intracellular staining and flow cytometry analysis of 10⁶ Jurkat cells using the Isotype Control for IgG_{2b(κ)} PE (SAB-602PE) compared with a Monoclonal Heme Oxygenase-1 Antibody (OSA-111PE), at a concentration of 10 µg/mL

FOR RESEARCH USE ONLY; NOT FOR THERAPEUTIC OR DIAGNOSTIC USE

5777 Hines Drive • Ann Arbor, MI • 48108 | Tel: 800-833-8651 or 800-668-6113 | Fax: 734-668-2793
www.assaydesigns.com | orders@assaydesigns.com | technical@assaydesigns.com

Last Revised: 6/24/2008