

## Mouse IgG<sub>1</sub> Isotype Control, DyLight™ 488 Conjugate

### Product Specifications

<b>Catalog Number:</b>	SAB-600-488
<b>Source:</b>	Mouse
<b>Isotype:</b>	IgG <sub>1</sub>
<b>Applications:</b>	Flow: 50 µg/mL Other applications not tested. <i>The optimal dilution for a specific application must be determined by the investigator</i>
<b>Concentration:</b>	See product label
<b>Purification:</b>	Protein A Affinity
<b>Format:</b>	PBS, pH 7.2, 0.09% azide
<b>Storage:</b>	Store at -20 °C <i>Shipping conditions may differ from the recommended storage temperature</i>

### Related Products:

<b>NEW!</b>	SAB-600PE	Mouse IgG <sub>1</sub> Isotype Control, PE Conjugate
<b>NEW!</b>	SAB-601PE	Mouse IgG <sub>2a</sub> Isotype Control, PE Conjugate
<b>NEW!</b>	SAB-601-488	Mouse IgG <sub>2a</sub> Isotype Control, DyLight 488™ Conjugate
<b>NEW!</b>	SAB-602PE	Mouse IgG <sub>2b(k)</sub> Isotype Control, PE Conjugate
<b>NEW!</b>	SAB-602-488	Mouse IgG <sub>2b(k)</sub> Isotype Control, DyLight 488™ Conjugate

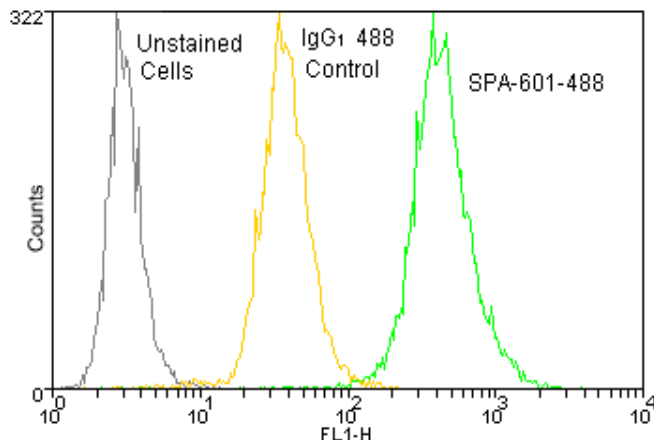
DyLight™ is a trademark of Thermo Fisher Scientific, Inc. and its subsidiaries.

### Background:

Isotype matched controls are useful in flow cytometry to determine a gross estimate of non-specific binding that may be observed with a specific antibody of interest<sup>1</sup>. In general, an isotype control should be of the same species and isotype as the antibody of interest, used at the same concentration, and conjugated to the same fluorophore. This reagent is an IgG<sub>1</sub> isotype mouse monoclonal antibody (Clone # MOPC-21), conjugated to DyLight™ 488. It is intended for use as an isotype control antibody for flow cytometry.

### Reference:

- O'Gorman, M.R.G. and Thomas, J. (1999) Cytometry **38**, 78-80.



**Intracellular** staining and flow cytometry analysis of 10<sup>6</sup> Jurkat cells using the Isotype Control for IgG<sub>1</sub> 488 (SAB-600-488) compared with a Monoclonal Calreticulin Antibody (SPA-601-488), at a concentration of 50 µg/mL

**FOR RESEARCH USE ONLY; NOT FOR THERAPEUTIC OR DIAGNOSTIC USE**

5777 Hines Drive • Ann Arbor, MI • 48108 | Tel: 800-833-8651 or 800-668-6113 | Fax: 734-668-2793  
www.assaydesigns.com | orders@assaydesigns.com | technical@assaydesigns.com