

2,3-dinor-6-keto-PGF_{1α} Affinity Resin

Product Specifications

Catalog Number:	RES-110
Source:	Sheep IgG Coupled to Sepharose® 4B
Cross Reactivity:	6-keto-PGF _{1α}
Applications:	Affinity Enrichment/Depletion Other applications not tested. <i>The optimal dilution for a specific application must be determined by the investigator</i>
Predicted M.W.:	342.5 g/mol
Concentration:	5 mg IgG per ml
Purification:	Protein G Affinity
Format:	50% slurry in TBS, 0.09% Sodium Azide
Storage:	Store at 4°C <i>Shipping conditions may differ from the recommended storage temperature</i>
Immunogen:	2,3-dinor-6-keto-PGF _{1α} coupled to BSA
Related Products:	
NEW! RES-100	6-keto-PGF _{1α} Affinity Resin
900-025	Urinary Prostacyclin EIA Kit
905-004	2,3-dinor-6-keto-PGF _{1α} Polyclonal Antibody

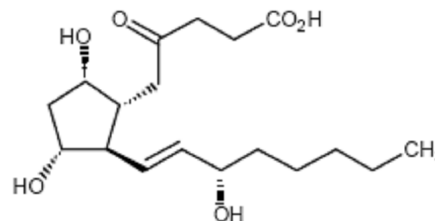
Background:

Prostacyclin (PGI₂) is involved in platelet aggregation, vasoconstriction, and reproductive functions¹⁻³. PGI₂ has a half life of 60 minutes in plasma but only 2 to 3 minutes in buffer³. The production of PGI₂ is typically monitored by measurement of 6-keto-PGF_{1α} and 2,3-dinor-6-keto-PGF_{1α}. 6-keto-PGF_{1α} is produced by the non-enzymatic hydration of PGI₂, and is further metabolized in urine to the 2,3-dinor derivative. A number of pharmaceuticals alter and/or inhibit the synthesis of PGI₂⁴. Methods to measure PGI₂ in urine typically involve HPLC⁵, gas chromatography/mass spectrometry⁶ or radioimmunoassay^{7,8} and enzyme immunoassay⁹ for 6-keto-PGF_{1α}.

References:

1. Chard, T. (1990) *An Introduction to Radioimmunoassay & Related Techniques 4th Ed.* Amsterdam: Elsevier.
2. Tijssen, P. (1985) *Practice & Theory of Enzyme Immunoassays*. Amsterdam: Elsevier.
3. Nies, A.S. (1986) *Clin.Pharmacol. Ther.* **39**, 481.
4. Brigham, K.L. *et al.* (1982) *Prostaglandins and the Cardiovascular System* New York: Raven Press.
5. Ylikorkala, O. and Makila, U.M. (1985) *Am J Obstet Gynecol.* **152**, 318.
6. Gerrard, J.M. (1989) *Can J Physiol Pharmacol.* **67**, 922.
7. Powell, W.S. (1987) *Anal Biochem.* **164**, 117.
8. Chiabrando, C. *et al.* (1989) *J Chromatography* **495**, 1.
9. Riutta, A. *et al.* (1994) *Anal Biochem.* **220**, 351.

2,3-dinor-6-keto-PGF_{1α}



FOR RESEARCH USE ONLY; NOT FOR THERAPEUTIC OR DIAGNOSTIC USE

5777 Hines Drive • Ann Arbor, MI • 48108 | Tel: 800-833-8651 or 800-668-6113 | Fax: 734-668-2793
www.assaydesigns.com | orders@assaydesigns.com | technical@assaydesigns.com