

Phosphoserine Polyclonal Antibody

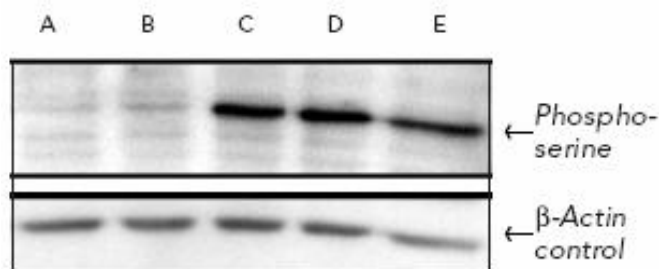
Product Specifications	
Catalog Number:	KAP-ST210
Host:	Rabbit
Species Reactivity:	Species independent
Applications: <i>The optimal dilution for a specific application must be determined by the investigator</i>	WB: 1 µg/mL IHC: 5 µg/mL IP: 10 µg/mg protein ELISA: 1µg/mL
Concentration:	See product label
Purification:	Peptide Affinity
Format:	PBS, 50% glycerol, 0.01% azide
Storage: <i>Shipping conditions may differ from the recommended storage temperature</i>	Store at -20°C
Immunogen:	Phosphoserine conjugated to KLH
Related Products:	
KAP-ST2101	Phosphoserine Polyclonal Antibody, Biotin Conjugate
KAP-ST2103	Phosphoserine Polyclonal Antibody, HRP Conjugate

Background:

Protein phosphorylation is a complex biochemical process that ultimately influences the mechanism by which a cell responds to a particular stimulus. A class of enzymes referred to as protein kinases regulates this process; these enzymes catalyze the transfer of the γ -P of ATP to a recipient protein that acts as a substrate. This post-translational modification is primarily directed onto serine and threonine amino acid residues within a protein. It has been noted that changes in the phosphorylation status of these phosphoproteins can alter the biological function of a protein. Additionally, aberrations in signal transduction cascade have been linked to a number of diseases, including cancer, diabetes, heart disease, inflammation and neurological disorders¹⁻³.

References:

1. Blume-Jensen, P. and Hunter, T. (2001) Nature **411**, 355-365.
2. Downward, J. (2001) Nature **411**, 759-762.
3. Pawson, T. and Saxton, T.M. (1999) Cell **97**, 675-678.



Western blot analysis of human MMRU melanoma cells probed with Phosphoserine polyclonal antibody. Top (from the left): MMRU cells treated with 0 (A), 50 (B), 200 (C), 400 (D), 1 long wavelength UV, or 0.1 µM of okadaic acid (E). Bottom: Same samples probed with β-actin antibody.

FOR RESEARCH USE ONLY; NOT FOR THERAPEUTIC OR DIAGNOSTIC USE

5777 Hines Drive • Ann Arbor, MI • 48108 | Tel: 800-833-8651 or 800-668-6113 | Fax: 734-668-2793
www.assaydesigns.com | orders@assaydesigns.com | technical@assaydesigns.com

Last Revised: 7/1/2008