



Tau (phospho-Ser262) Polyclonal Antibody

Product Specifications

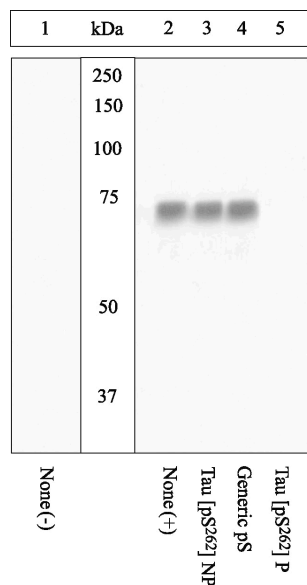
Catalog Number:	KAP-MA306
Host:	Rabbit
Species Reactivity:	Human
Applications: <i>The optimal dilution for a specific application must be determined by the investigator</i>	WB: 1:1,000 (ECL)
Predicted m.w.:	45-60 kDa
Concentration:	See product label
Purification:	Peptide Affinity
Format:	Dulbecco's PBS (without Mg ²⁺ and Ca ²⁺), pH 7.3, 1.0 mg/mL, BSA, 50% glycerol, 0.05% sodium azide
Storage: <i>Shipping conditions may differ from the recommended storage temperature</i>	Store at -20°C
Immunogen:	Synthetic phospho-peptide derived from the sequence of human Tau; sequence identical with monkey, baboon, cow and goat
Related Products:	
KAP-MA308	Tau (phospho-Ser396) Polyclonal Antibody
KAM-MA305	Tau Monoclonal Antibody (T1)
SAB-300	Rabbit IgG Polyclonal Antibody, HRP Conjugate

Background:

Tau proteins belong to the microtubule-associated protein (MAP) family that stabilizes neuronal microtubules in cell processes, establishment of cell polarity and intracellular transport. Six isoforms ranging from 352 to 441 amino acids derive from a single tau gene by alternative splicing in the human central nervous system. In Alzheimer's disease, abnormally phosphorylated tau proteins aggregate into paired helical filaments and lose the capacity to maintain the microtubule tracks. Missense Tau mutations appear in individuals with a type of frontotemporal dementia, FTDP-17.

References:

1. Morishima-Kawashima, M., *et al.* (1995) J Biol Chem. **270**, 823-829.
2. Mandelkow, E.M., *et al.* (1998) Trends in Cell Biology **8**, 425-427.
3. Parvoneh, P., *et al.* (1998) Annals of Neurol. **43**, 815-825.



Western blot analysis of NIH 3T3 cell lysates spiked with human recombinant tau left untreated (1) or phosphorylated with PKA (2-5), probed with Tau (phospho-Ser262) Polyclonal Antibody following prior incubation with: no peptide (1,2), the non-phosphopeptide corresponding to the immunogen (3), a generic phosphoserine-containing peptide (4), or the phosphopeptide immunogen (5).