

c-FLIP Polyclonal Antibody

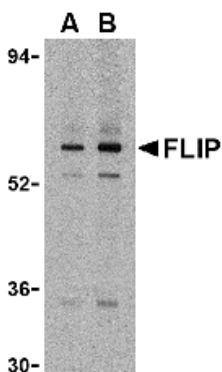
Product Specifications	
Catalog Number:	AAP-440
Host:	Rabbit
Species Reactivity:	Human, mouse, and rat
Applications: <i>The optimal dilution for a specific application must be determined by the investigator</i>	WB: 0.5 - 1.0 µg/mL ICC: 5.0 µg/mL
Predicted m.w.:	28-58 kDa
Concentration:	See product label
Purification:	Peptide Affinity
Format:	PBS, 0.02% sodium azide
Storage: <i>Shipping conditions may differ from the recommended storage temperature</i>	Store at 4°C
Immunogen:	Synthetic peptide derived from the sequence of human c-FLIP ⁶ , conjugated to KLH; sequence conserved among all c-FLIP variants
Related Products:	
LYC-HL100	HeLa Cell Lysate
905-226	FLIP γ/δ (CT) Polyclonal Antibody

Background:

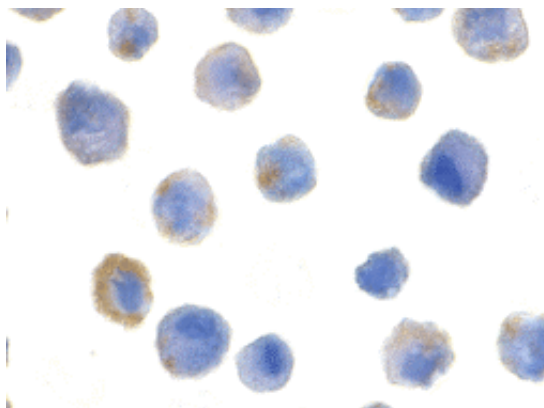
cFLIP (cellular FLICE-like inhibitory protein) is a cellular homologue of the viral protein, vFLIP, also known as CASH, Casper, CLARP, FLAME, I-FLICE, MRIT and Usurpin^{1,2}. cFLIP contains two death effector domains (DEDs) and is expressed as either a short or long splice variant called cFLIP_s and cFLIP_L, respectively^{2,3}. cFLIP can block Fas-mediated apoptosis presumably through the C-terminal region of cFLIP_L which shares homology with the proteolytic domain of caspase-8 (FLICE). However, cFLIP lacks the active proteinase site required for catalytic activity. Therefore, although it can be recruited to the ligated Fas-signaling complex, it cannot deliver a death signal. cFLIP is expressed in the cytosol, and cells with high levels of cFLIP relative to FLICE appear generally resistant to apoptosis, whereas cells with low levels of cFLIP relative to FLICE are more sensitive to apoptosis⁴. cFLIP acts as a caspase-8 dominant negative regulator, blocking apoptosis induced by the oligomerization of the adapter protein, FADD⁴. cFLIP interacts with FADD and caspase-8 through their respective DEDs¹. The regulation and role of cFLIP in mediating signals that promote survival, such as NF- κ B, versus inhibiting cell death by blocking cell death receptor-induced caspase activation, is unclear⁵.

References:

1. Hu, W.H., *et al.* (2000) *J Biol Chem.* **275**, 10838-10844.
2. Thomas, R.K., *et al.* (2002) *Am J Pathol.* **160**, 1521-1528.
3. Hennino A., *et al.* (2000) *J Immunol.* **165**, 3023-3030.
4. Panka, D.J., *et al.* (2001) *J Biol Chem.* **276**, 6893-6896.
5. Rathmell, J.C. and Thompson, C.B. (2002) *Cell* **109**, S97-S107.
6. Irmiler, M., *et al.* (1997) *Nature* **388**,190-195.



Western blot analysis of K562 cell lysate probed with c-FLIP polyclonal antibody at 1 (A) and 2 (B) µg/mL



Immunocytochemistry of HeLa cells with c-FLIP polyclonal antibody at 5 µg/mL