

Bak Polyclonal Antibody

Product Specifications

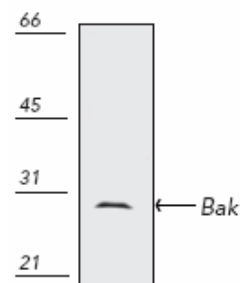
Catalog Number:	AAP-030
Host:	Rabbit
Species Reactivity:	Hamster, monkey, pig, and human (<i>weak</i>) Other species not tested.
Applications: <i>The optimal dilution for a specific application must be determined by the investigator</i>	WB: 1:1000 (ECL) IF: Yes IHC: 1:50 IP: 1:100 Other applications not tested.
Predicted m.w:	~30 kDa
Concentration:	See product label
Purification:	Peptide Affinity
Format:	Borate buffered saline, pH 8.2
Storage: <i>Shipping conditions may differ from the recommended storage temperature</i>	Store at -20°C
Immunogen:	Synthetic peptide derived from the sequence of human Bak, conjugated to KLH ¹
Related Products:	
LYC-HL101	HeLa Cell Lysate (Heat Shocked)
SAB-300	Rabbit IgG Polyclonal Antibody, HRP Conjugate
AAS-040	Bax Polyclonal Antibody
AAS-070	Bcl-2 Polyclonal Antibody
900-138	Bax Human EIA Kit

Background:

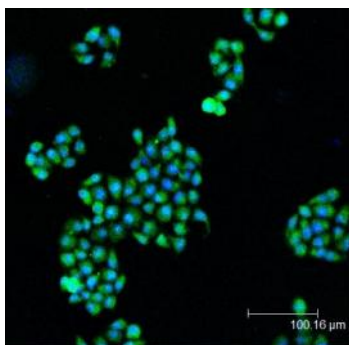
Bak is a 23 kDa homolog of the apoptosis inhibitor, Bcl-2, with an apparent molecular weight of 30 kDa on SDS - PAGE. Bak is a member of the Bcl-2 family of proteins and contains the bcl-2 homology regions (BH-) 1, 2 and 3. Unlike Bcl-2, Bak promotes apoptosis by interacting with and counteracting the anti-cell death effect of Bcl-2. Enforced expression of Bak induces rapid and extensive apoptosis of serum-deprived fibroblasts¹. However, Bak can inhibit cell death in an Epstein -Barr virus transformed cell line².

References:

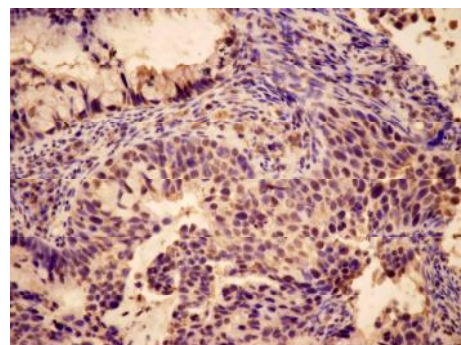
1. Chittenden, T., *et al.* (1995) *Nature* **374**, 733-736.
2. Kiefer, M.C. (1995) *Nature* **374**, 736-739.



Western blot analysis of human epidermoid carcinoma A431 cell lysate, probed with Bak polyclonal antibody



Confocal immunofluorescent staining of HeLa cells using Bak polyclonal antibody (green); nuclei are stained in blue pseudocolor using DRAQ5



Immunohistochemical staining of human cervical cancer tissue with Bak polyclonal antibody

Assay Designs makes every effort to provide a consistent source of high quality polyclonal antibodies. However, due to variations inherent in this technology, investigators are urged to purchase sufficient quantities of a specific lot number if an identical antibody is required throughout a study.

FOR RESEARCH USE ONLY; NOT FOR THERAPEUTIC OR DIAGNOSTIC USE

5777 Hines Drive • Ann Arbor, MI • 48108 | Tel: 800-833-8651 or 800-668-6113 | Fax: 734-668-2793
www.assaydesigns.com | orders@assaydesigns.com | technical@assaydesigns.com