



DRAM Polyclonal Antibody

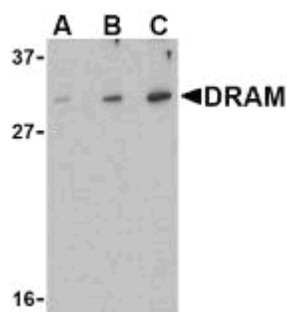
Product Specifications	
Catalog Number:	905-738-100
Host:	Rabbit
Species Reactivity:	Human, mouse, rat
Applications: <i>The optimal dilution for a specific application must be determined by the investigator</i>	WB: 0.5-1 µg/mL
Predicted m.w:	~31 kDa
Concentration:	See product label
Purification:	Peptide Affinity
Format:	PBS, 0.02% sodium azide
Storage:	Store at 4°C
Immunogen:	Synthetic peptide corresponding to sequence near the amino-terminus of human DRAM
Related Products	
905-721-100	Beclin-1 Polyclonal Antibody
905-722-100	ARG7 Polyclonal Antibody
905-723-100	LAMP2 Polyclonal Antibody
905-724-100	PIST Polyclonal Antibody

Background:

Damage-regulated autophagy modulator (DRAM) is a p53 target gene encoding a lysosomal protein that induces autophagy, a process that degrades cytosolic proteins and organelles^{1,2}. It has been suggested that activation of DRAM by p53 is simultaneous to the activation by p53 of one or more proapoptotic genes such as PUMA and Bax, and that the signaling pathways regulated by these genes together promote a full cell death response. By itself, DRAM cannot induce apoptosis, but the fact that it is inactivated in certain cancers³ highlights the importance of DRAM and suggests that autophagy may play a more important role in cancer than initially suspected. At least two different isoforms of DRAM are known to exist.

References:

1. Crighton, D., *et al.* (2006) *Cell* **126**, 121-134.
2. Gozuacik, D. and Kimchi, A. (2004) *Oncogene* **23**, 2891-2906.
3. Crighton, D., Wilkinson, S., Ryan, K.M. (2007) *Autophagy* **3**, 72-74.



Western blot analysis of K562 cell lysate with DRAM Polyclonal Antibody at (A) 0.5, (B) 1 and (C) 2 µg/mL.