

BMI-1 Polyclonal Antibody

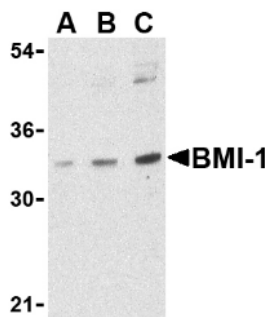
Product Specifications	
Catalog Number:	905-731-100
Host:	Rabbit
Species Reactivity:	Human, mouse, rat
Applications: <i>The optimal dilution for a specific application must be determined by the investigator</i>	WB: 0.5-1 µg/mL ICC: 10 µg/mL
Predicted m.w:	~33 kDa
Concentration:	See product label
Purification:	Peptide Affinity
Format:	PBS, 0.02% sodium azide
Storage: <i>Shipping conditions may differ from the recommended storage temperature</i>	Store at -20°C
Immunogen:	Synthetic peptide derived from the sequence of human BMI-1
Related Products:	
905-636	p16 Monoclonal Antibody

Background:

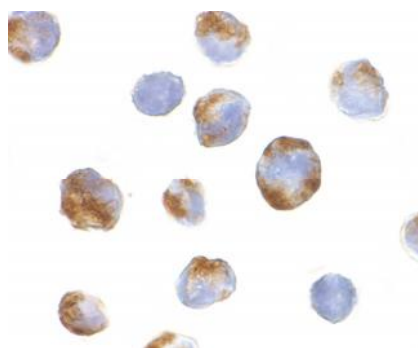
The transcriptional repressor BMI-1 was first identified as a proto-oncogene frequently activated by Moloney murine leukemia proviral insertions in mice and cooperating with c-myc in the generation of mouse lymphomas¹. BMI-1 is involved in segment specification, cell growth and maintenance, transcriptional regulation, and chromatin modification. A major target of BMI-1 is the ink4a locus which encodes tumor suppressor proteins p16 and p19Arf, which are important in tumor progression and thought to be critical in cell proliferation and senescence². Recent studies have also shown that BMI-1 is required for the maintenance of adult normal and leukemic stem cells³, suggesting that BMI-1 could be an attractive target for stem cell proliferation and renewal, as well as for anti-cancer strategies.

References:

1. Alkema, M.J., *et al.* (1993) *Hum Mol Genet.* **2**, 1597-1603.
2. Jacobs, J.J., *et al.* (1999) *Nature* **397**, 164-168.
3. Lessard, J. and Sauvageau, G. (2003) *Nature* **423**, 255-260.



Western blot analysis of K562 cell lysate with BMI-1 Polyclonal Antibody at (A) 0.5, (B) 1 and (C) 2 µg/mL



Immunocytochemistry of K562 cells with BMI-1 Polyclonal Antibody at 10 µg/mL

FOR RESEARCH USE ONLY; NOT FOR THERAPEUTIC OR DIAGNOSTIC USE

5777 Hines Drive • Ann Arbor, MI • 48108 | Tel: 800-833-8651 or 800-668-6113 | Fax: 734-668-2793
www.assaydesigns.com | orders@assaydesigns.com | technical@assaydesigns.com

Last Revised: 4/4/2008