

CTRP7 Polyclonal Antibody

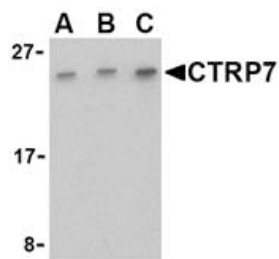
Product Specifications	
Catalog Number:	905-720-100
Host:	Rabbit
Species Reactivity:	Human, mouse, rat
Applications: <i>The optimal dilution for a specific application must be determined by the investigator</i>	WB: 0.5-2 µg/mL ICC: 0.5 µg/mL
Predicted m.w.:	~24 kDa <i>CTRP proteins are highly post-translationally modified and can migrate in SDS-PAGE at positions other than their predicted size.</i>
Concentration:	See product label
Purification:	Peptide Affinity
Format:	PBS, 0.02% sodium azide
Storage: <i>Shipping conditions may differ from the recommended storage temperature</i>	Store at 4°C
Immunogen:	Synthetic peptide corresponding to sequence near the carboxy-terminus of human CTRP7
Related Products:	
905-714-100	Adiponectin Polyclonal Antibody
905-715-100	CTRP1 Polyclonal Antibody
905-728-100	CTRP2 Polyclonal Antibody
905-716-100	CTRP3 Polyclonal Antibody
905-717-100	CTRP4 Polyclonal Antibody
905-718-100	CTRP5 Polyclonal Antibody
905-719-100	CTRP6 Polyclonal Antibody

Background:

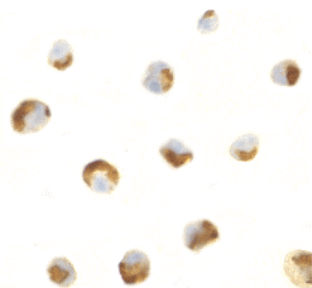
Adipose tissue of an organism plays a major role in regulating physiologic and pathologic processes such as metabolism and immunity by producing and secreting a variety of bioactive molecules termed adipokines¹. One highly conserved family of adipokines is adiponectin/ACRP30 and its structural and functional paralogs, the C1q/tumor necrosis factor- α -related proteins (CTRPs) 1-7². Unlike adiponectin, which is expressed exclusively by differentiated adipocytes, the CTRPs are expressed in a wide variety of tissues³. These proteins are thought to act mainly on liver and muscle tissue to control glucose and lipid metabolism. An analysis of the crystal structure of adiponectin revealed a structural and evolutionary link between TNF and C1q-containing proteins, suggesting that these proteins arose from a common ancestral innate immunity gene⁴. Like the other members of the adiponectin and CTRP protein family, the mature CTRP7 is secreted and can be detected in blood¹.

References:

1. Fantuzzi, G. (2005) *J Allergy Clin Immunol.* **115**, 911-919.
2. Tsao, T.-S., *et al.* (2002) *Euro J Pharmacol.* **440**, 213-221.
3. Wong, G.W., *et al.* (2004) *Proc Natl Acad Sci USA* **101**, 10302-10307.
4. Shapiro, L. and Scherer, P.E. (1998) *Curr Biol.* **8**, 335-338.



Western blot analysis of 293 cell lysate with CTRP7 Polyclonal antibody at (A) 0.5, (B) 1, and (C) 2 µg/mL.



Immunocytochemistry of HL60 cells with CTRP7 antibody at 0.5 µg/mL.