

PRMT5 Polyclonal Antibody

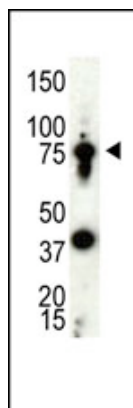
Product Specifications	
Catalog Number:	905-698-100
Host:	Rabbit
Species Reactivity:	Human
Applications: <i>The optimal dilution for a specific application must be determined by the investigator</i>	WB: 1:100-500 ELISA: 1:1,000
Predicted m.w:	~73 kDa
Concentration:	See product label
Purification:	Protein G Affinity
Format:	PBS with 0.09% sodium azide
Storage:	Store at -20°C
Immunogen:	Synthetic peptide derived from a sequence of human JBP1, conjugated to KLH
Related Products:	
907-025 KAP-TF121	Methyltransferase Activity Kit Methylated Lysine Polyclonal Antibody
905-699 905-692	PRMT1 Polyclonal Antibody PRMT2 Polyclonal Antibody

Background:

Arginine methylation is an irreversible post translational modification which has only recently been linked to protein activity. At least three types of PRMT enzymes have been identified in mammalian cells. These enzymes have been shown to have essential regulatory functions by methylation of key proteins in several fundamental areas. These proteins include nuclear proteins, IL enhancer binding factor, nuclear factors, cell cycle proteins, signal transduction proteins, apoptosis proteins, and viral proteins. The mammalian PRMT family currently consists of 7 members that share two large domains of homology. Outside of these domains, epitopes were identified and antibodies against all 7 PRMT members have been developed.

References:

1. Pal, S., *et al.* (2003) *Mol Cell Biol.* **23**, 7475-7487.
2. Rho, J., *et al.* (2001) *J Biol Chem.* **276**, 11393-11401.
3. Pollack, B.P., *et al.* (1999) *J Biol Chem.* **274**, 31531-31542.
4. Gilbreth, M., *et al.* (1998) *Proc Natl Acad Sci U.S.A.* **95**, 14781-14786.



Western blot analysis of PRMT5 in whole HL60 cell lysates