

SET07 Monoclonal Antibody (43AT551.86.76)

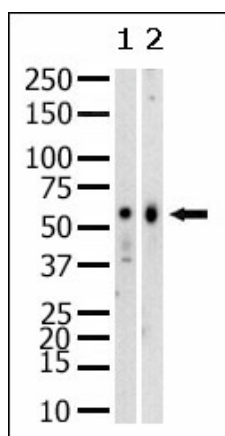
Product Specifications	
Catalog Number:	905-694-100
Host:	Mouse
Isotype:	IgG ₁
Species Reactivity:	Mouse and human
Applications: <i>The optimal dilution for a specific application must be determined by the investigator</i>	WB: 1:100-500 ELISA: 1:1,000
Predicted m.w:	~43 kDa
Concentration:	See product label
Purification:	Peptide Affinity
Format:	PBS with 0.09% sodium azide
Storage:	Store at -20°C
Immunogen:	Purified recombinant GST fusion protein encoding the N-terminal region of human SET07
Related Products:	907-025 Methyltransferase Activity Kit KAP-TF121 Methylated Lysine Polyclonal Antibody

Background:

SET07 is a histone methyltransferase that methylates Lys-20 of histone H4. H4 Lys-20 methylation represents a specific tag for epigenetic transcriptional repression. The nuclear SET07 protein, which associates with silent chromatin on euchromatic arms but shows no association with constitutive heterochromatin, prefers nucleosomes as substrate compared to free histones. It appears that SET07 may play a role in maintaining silent chromatin by preventing neighboring acetylation of H4 tail. Although the SET domain contains the active site of enzymatic activity, both sequences upstream and downstream of the SET domain are required for methyltransferase activity.

References:

1. Nishioka, K., *et al.* (2002) *Mol Cell* **9**, 1201-1213.
2. Fang, J., *et al.* (2002) *Curr Biol.* **12**, 1086-1099.



Western blot analysis of SET07:
 Lane 1 - SAOS-2
 Lane 2 - NIH/3T3 cell lysates