

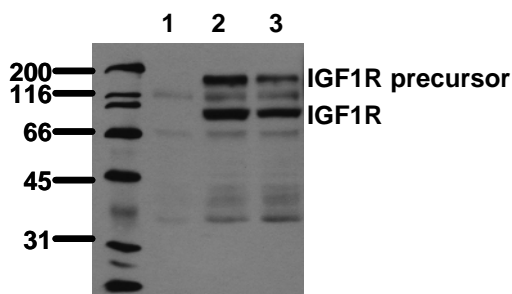
## IGF1 Receptor (phospho-Tyr1316) Monoclonal Antibody (2B9)

### Product Specifications

<b>Catalog Number:</b>	905-643
<b>Host:</b>	Mouse
<b>Isotype:</b>	IgG <sub>1</sub>
<b>Species Reactivity:</b>	Human
<b>Predicted m.w.:</b>	~97 kDa
<b>Applications:</b> <i>The optimal dilution for a specific application must be determined by the investigator</i>	<b>WB:</b> 1 µg/mL (ECL) <i>Recommended blocking buffer CPPT: 0.5% (w/v) casein, 1% (w/v) PEG 4000, 1% (w/v) PVP, 0.1% (v/v) Tween 20, 2x PBS</i> <b>ELISA:</b> 0.1 µg/mL
<b>Concentration:</b>	See product label
<b>Purification:</b>	Thiophilic adsorption and size exclusion chromatography
<b>Format:</b>	Lyophilized from 2x PBS, 0.09% sodium azide, PEG, and sucrose; reconstitute with 1mL of water for 15 min at RT
<b>Storage:</b> <i>Shipping conditions may differ from the recommended storage temperature</i>	Store at -20°C; store at -80°C after reconstitution (aliquot to avoid repeated freeze/thaw cycles)
<b>Immunogen:</b>	Synthetic phospho-peptide derived from the sequence of human IGF1 Receptor, conjugated to hemocyanin
<b>Related Products:</b>	
905-644	IGF1 Receptor Monoclonal Antibody
905-429	IGF1 Polyclonal Antibody
900-150	IGF1 (human) EIA Kit

### Background:

The heterodimeric IGF1 Receptor (IGF1R) tyrosine kinase consists of an extracellular  $\alpha$ -chain, a transmembrane domain and an intracellular  $\beta$ -chain. IGF1R activation occurs upon binding of the peptide hormones IGF1 and IGF2, leading to autophosphorylation of tyrosine residues 1131, 1135, and 1136 in the activation loop of the  $\beta$ -chain. Additional autophosphorylation sites including tyrosine residues 950 and 1316 regulate the assembly of signal transduction complexes. This antibody specifically recognizes the IGF1R phosphorylated at tyrosine 1316.



Western blot analysis of untreated (1), Insulin-treated (2), or IGF1-treated (3) HeLa cell lysates, probed with IGF1 Receptor (phospho-Tyr1316) Monoclonal Antibody (2B9).

**FOR RESEARCH USE ONLY; NOT FOR THERAPEUTIC OR DIAGNOSTIC USE**

5777 Hines Drive • Ann Arbor, MI • 48108 | Tel: 800-833-8651 or 800-668-6113 | Fax: 734-668-2793  
[www.assaydesigns.com](http://www.assaydesigns.com) | [orders@assaydesigns.com](mailto:orders@assaydesigns.com) | [technical@assaydesigns.com](mailto:technical@assaydesigns.com)

Last Revised: 9/5/2008