

Synuclein- α Polyclonal Antibody

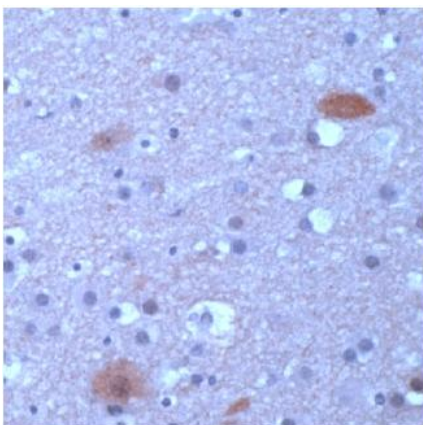
Product Specifications	
Catalog Number:	905-565
Host:	Rabbit
Species Reactivity:	Human and rat. Others not tested.
Applications: <i>The optimal dilution for a specific application must be determined by the investigator</i>	IHC: 1:100
Concentration:	See product label
Purification:	Affinity
Format:	10 mM PBS, pH 7.4, with BSA and sodium azide
Storage: <i>Shipping conditions may differ from the recommended storage temperature</i>	Store at 4°C
Immunogen:	Synthetic peptide near the C-terminus of human Synuclein- α
Related Products:	
LYT-RB100	Rat Brain Tissue Extract
SAB-300	Goat anti-Rabbit IgG Polyclonal Antibody, HRP Conjugate

Background:

Synuclein- α is a protein of 140 amino acids and a member of the synuclein family¹. It may be implicated in the formation of Lewy bodies and the selective degeneration of neurons in sporadic Parkinson's disease and Lewy body dementia^{2,3}. This antibody is specific for α -synuclein and does not cross-react with β -synuclein.

References:

1. Trojanowski, J.Q. and Lee, V.M. -Y. (1998) Arch Neurol. **55**, 151-152.
2. Lavedan, C. (1998) Genome Res. **8**, 871-880.
3. Recchia, A., et al. (2004) FASEB J. **18**, 617-626.



Human brain stained with Synuclein- α antibody (#905-565)

FOR RESEARCH USE ONLY; NOT FOR THERAPEUTIC OR DIAGNOSTIC USE