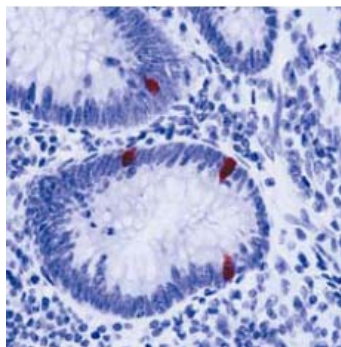




Anti-human Serotonin, mouse monoclonal

- Catalog Number:** 905-548
- Quantity:** 1.0 mL at 200 µg/mL
- Background:** Serotonin-positive cells are present in gastric, duodenal, jejunal, ileal, colonic and appendiceal mucosae. Positive cells are sparse and usually occur in the lower half of the gastric and intestinal mucosae. In the appendix, in addition to the mucosal serotonin-containing cells, there are single or small clusters of serotonin-positive cells in the sub-epithelial region of the lamina propria.
- Clone:** SPM146
- Isotype:** IgG_{1/κ}
- Source:** 5-Hydroxytryptamine hydrochloride (3-(2-aminoethyl)-5-hydroxyindole; serotonin).
- Form:** 10 mM PBS, pH 7.4 with BSA and sodium azide.
- Stability:** Stable for 2 years when stored at 4°C.
- Application:**
- Immunohistology (Formalin/paraffin)
Working dilution: 1:20 for 30 min at RT
Staining of formalin-fixed tissues requires boiling tissue sections in 10 mM citrate buffer, pH 6.0 for 10 min followed by cooling at RT for 20 min.
The optimal dilution for a specific application should be determined by the investigator.
- Species Reactivity:** Human. Others not tested.



Human appendix stained with
Anti-serotonin antibody

For Research Use Only; Not for Therapeutic or Diagnostic Use.