

IL-22R (NT) Polyclonal Antibody

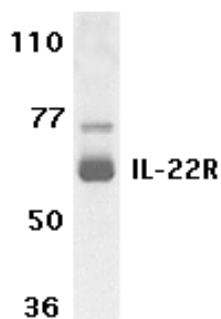
Product Specifications	
Catalog Number:	905-310
Host:	Rabbit
Species Reactivity:	Human
Predicted m.w:	~62 kDa
Applications: <i>The optimal dilution for a specific application must be determined by the investigator</i>	WB: 0.5 to 1 µg/mL ICC: 10 µg/mL
Concentration:	See product label
Purification:	Peptide Affinity
Format:	PBS, 0.02% sodium azide
Storage: <i>Shipping conditions may differ from the recommended storage temperature</i>	Store at 4°C
Immunogen:	Synthetic peptide derived from sequence near the amino-terminus (NT) of human IL-22R precursor

Background:

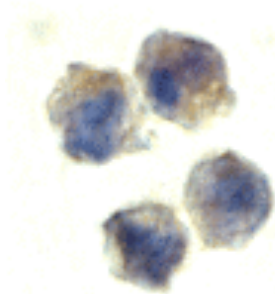
Researchers recently identified a novel cytokine designated IL-TIF (for IL-10 related T cell-derived inducible factor and IL-22)¹⁻³. The receptor for IL-22 (known as IL-22R, CRF2-9 and IL-TIF-R1 chain) is a new member of the class II cytokine receptor family³⁻⁴. IL-22R forms a complex with IL-10 receptor β chain and mediates IL-22 signaling via the JAK-STAT signaling pathway. IL-22R expression occurs in normal liver and kidney and their cell lines HepG2 and TK-10. A recently identified soluble form of IL-22 receptor termed IL-22 binding protein (IL-22BP) and IL-22 receptor-α 2 (IL-22RA2)⁵⁻⁷ prevents binding of IL-22 to the functional cell surface IL-22R complex and neutralizes IL-22 activity. LPS induces IL-22 expression, suggesting the role of IL-22 in inflammatory response.

References:

1. Dumoutier, L., *et al.* (2000) *Immunol.* **164**, 1814-1819.
2. Dumoutier, L., *et al.* (2000) *PNAS USA* **97**, 10144-10149.
3. Xie, M.H., *et al.* (2000) *J Biol Chem.* **275**, 31335-31339.
4. Kotenko, S.V., *et al.* (2001) *J Biol Chem.* **276**, 2725-2732.
5. Kotenko, S.V., *et al.* (2001) *J Immunol.* **166**, 7096-7103.
6. Dumoutier, L., *et al.* (2001) *J Immunol.* **166**, 7090-7095.
7. Xu, W., *et al.* (2001) *PNAS USA*, **98**, 9511-9516.



Western blot analysis of human HepG2 cell lysate probed with IL-22R (NT) Polyclonal Antibody at 1 µg/mL



Immunocytochemistry of HepG2 cells with IL-22R (NT) Polyclonal Antibody at 10 µg/mL