

## IL-21R (NT) Polyclonal Antibody

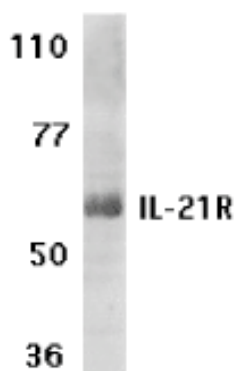
Product Specifications	
<b>Catalog Number:</b>	905-309
<b>Host:</b>	Rabbit
<b>Species Reactivity:</b>	Human
<b>Predicted m.w:</b>	~60 kDa
<b>Applications:</b> <i>The optimal dilution for a specific application must be determined by the investigator</i>	<b>WB:</b> 0.5 to 1 µg/mL
<b>Concentration:</b>	See product label
<b>Purification:</b>	Peptide Affinity
<b>Format:</b>	PBS, 0.02% sodium azide
<b>Storage:</b> <i>Shipping conditions may differ from the recommended storage temperature</i>	Store at 4°C
<b>Immunogen:</b>	Synthetic peptide derived from sequence near the amino-terminus (NT) of human IL-21R precursor
<b>Related Products:</b>	
905-308	IL-21R (ED) Polyclonal Antibody
905-307	IL-21 Polyclonal Antibody

### Background:

IL-21 is a novel cytokine identified in human and mouse that shows significant homology to IL-2, IL-4, and IL-15<sup>1</sup>. The receptor for IL-21 (IL-21R; also termed NILR for novel Interleukin receptor) is a new member of the class I cytokine receptor family<sup>1-2</sup>. IL-21R forms a complex with the common cytokine receptor  $\gamma$  chain,  $\gamma_c$ , and mediates IL-21 signaling<sup>3-4</sup>. IL-21 and its receptor activate the JAK-STAT signaling pathway. IL-21 is expressed in activated T cells, and HL-60 and THP-1 cell lines. IL-21 plays a role in the proliferation and maturation of NK, B and T cell populations.

#### References:

1. Parrish-Novak, J., *et al.* (2000) *Nature* **408**, 57-63.
2. Ozaki, K., *et al.* (2000) *PNAS USA*. **97**, 11439-11444.
3. Asao, H., *et al.* (2001) *J Immunol*. **167**, 1-5.
4. Vosschenrich, C.A., *et al.* (2001) *Curr Biol*. **11**, R175-177.



Western blot analysis of human Raji cell lysate probed with IL-21R (NT) Polyclonal Antibody at 1 µg/mL