

CX₃CR1 (NT) Polyclonal Antibody

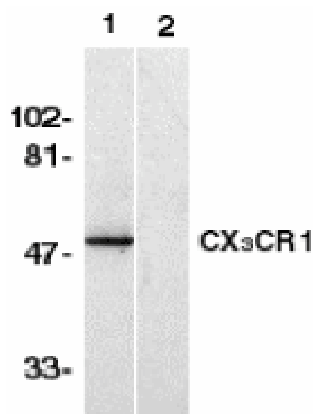
Product Specifications	
Catalog Number:	905-280
Host:	Rabbit
Species Reactivity:	Human, mouse, and rat
Predicted m.w:	~50 kDa
Applications: <i>The optimal dilution for a specific application must be determined by the investigator</i>	WB: 1:500-1:2000 IHC: 2 µg/mL
Concentration:	See product label
Purification:	Peptide Affinity
Format:	PBS, 0.02% sodium azide
Storage: <i>Shipping conditions may differ from the recommended storage temperature</i>	Store at -20°C
Immunogen:	Synthetic peptide derived from sequence near the amino-terminus (NT) of human CX ₃ CR1
Related Products:	
905-279	CX ₃ CR1 (EL) Polyclonal Antibody

Background:

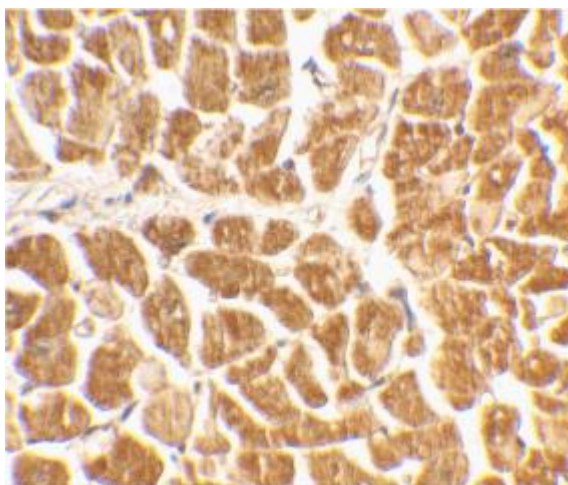
CX₃CR1 is a seven-transmembrane protein and the native receptor for fractalkine¹⁻⁵. Researchers cloned the genes encoding human, murine, and rat CX₃CR1, respectively designating them V28/CMKBRL1, CX₃CR1, and RBS11¹⁻⁴. CX₃CR1 expression enhances HIV-1 and HIV-2 envelope fusion and virus infection⁶. CX₃CR1 mediates leukocyte migration and adhesion⁵ and is a highly selective marker for cytotoxic effector lymphocytes such as NK cells, CTLs, and γδ T cells⁷.

References:

1. Raport, C.J., *et al.* (1995) *Gene* **163**, 295-299.
2. Combadiere, C., *et al.* (1995) *DNA Cell Biol.* **14**, 673-680.
3. Combadiere, C., *et al.* (1998) *Biochem Biophys Res Commun.* **253**, 728-732.
4. Harrison, J.K., *et al.* (1994) *Neurosci Lett.* **169**, 85-89.
5. Imai, T., *et al.* (1997) *Cell* **91**, 521-530.
6. Combadiere, C., *et al.* (1998) *J Biol Chem.* **273**, 23799-23804.
7. Umehara, H., *et al.* (2004) *Arterioscler Thromb Vasc Biol.* **24**, 34-40.



Western blot analysis of human spleen lysate with CX₃CR1 Polyclonal Antibody in the absence (1) or presence (2) of blocking peptide



Immunohistochemical staining of human heart tissue using CX₃CR1 Polyclonal Antibody at 2 µg/mL