

## TACE/adam17 (CT) Polyclonal Antibody

### Product Specifications

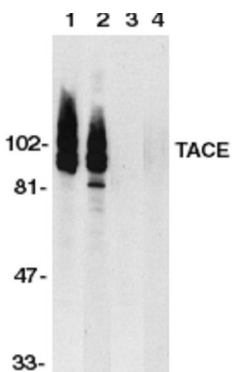
<b>Catalog Number:</b>	905-249
<b>Host:</b>	Rabbit
<b>Species Reactivity:</b>	Human, mouse, and rat
<b>Applications:</b> <i>The optimal dilution for a specific application must be determined by the investigator</i>	<b>WB:</b> 1:500 to 1:2000
<b>Predicted m.w:</b>	~80 to 130 kDa (may represent mature protein, precursor, and glycosylated TACE)
<b>Concentration:</b>	See product label
<b>Purification:</b>	Immunoaffinity Purified
<b>Format:</b>	PBS, 0.02% sodium azide
<b>Storage:</b> <i>Shipping conditions may differ from the recommended storage temperature</i>	Store at -20°C
<b>Immunogen:</b>	Synthetic peptide derived from sequence near the carboxy-terminus of human IKKe/IKK- $I^{1-3}$
<b>Related Products:</b>	
SAB-300	Goat anti-Rabbit IgG Polyclonal Antibody, HRP Conjugate
LYC-HL100	HeLa Cell Lysate
LYC-JL100	Jurkat Cell Lysate
900-099	TNF- $\alpha$ (human) EIA Kit
900-047	TNF- $\alpha$ (mouse) EIA Kit
900-086A	TNF- $\alpha$ (rat) EIA Kit

### Background:

Tumor-necrosis factor- $\alpha$ , a proinflammatory cytokine, contributes to a variety of inflammatory disease responses and programmed cell death. TNF- $\alpha$  is synthesized as a 26K type II membrane-bound precursor cleaved by a convertase to generate secreted 17K mature TNF- $\alpha$ . TNF- $\alpha$  converting enzyme (TACE) protein was recently purified, and the human and mouse TACE cDNAs cloned by several groups separately<sup>1-3</sup>. TACE is a membrane-bound metalloprotease-disintegrin in the family of mammalian ADAM (for a disintegrin and metalloprotease). TACE also processes other cell surface proteins, including TNF receptor, TGF  $\alpha$ , the Lselectin adhesion molecule, and alpha-cleavage of amyloid protein precursor (APP)<sup>4,5</sup>. TACE mRNA expression occurs in a variety of human and murine tissues. The Eighth International Conference of the Inflammation Research Association selected TACE as one of the few targets in cytokine activation<sup>6</sup>.

#### References:

1. Black, R.A., *et al.* (1997) Nature **385**, 729-733.
2. Moss, M.L., *et al.* (1997) Nature **385** 733-736.
3. Mizui, Y., *et al.* (1999) Gene **233**, 67-74.
4. Peschon, J.J., *et al.* (1998) Science **282**, 1281-1284.
5. Buxbaum, J.D., *et al.* (1998) Biol Chem. **273**, 27765-27767.
6. Giegel, D.A., *et al.* (1998) Agents Actions Suppl. **49**, 1-3.



Western blot analysis of TACE in HeLa (1,2) and Jurkat (2,4) whole cell lysate in the absence (1,2) or presence (3,4) of blocking peptide with anti-TACE (CT) at 1:500 dilution

**FOR RESEARCH USE ONLY; NOT FOR THERAPEUTIC OR DIAGNOSTIC USE**

5777 Hines Drive • Ann Arbor, MI • 48108 | Tel: 800-833-8651 or 800-668-6113 | Fax: 734-668-2793  
[www.assaydesigns.com](http://www.assaydesigns.com) | [orders@assaydesigns.com](mailto:orders@assaydesigns.com) | [technical@assaydesigns.com](mailto:technical@assaydesigns.com)

Last Revised: 5/29/2008