

## mGluR1 Polyclonal Antibody

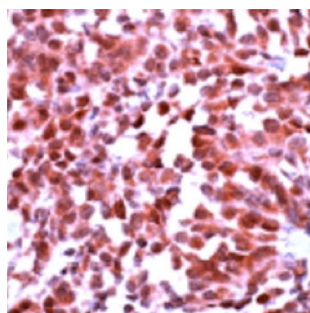
Product Specifications	
<b>Catalog Number:</b>	905-468
<b>Host:</b>	Rabbit
<b>Species Reactivity:</b>	Human, mouse, rat, monkey, and chicken (others not tested)
<b>Applications:</b> <i>The optimal dilution for a specific application must be determined by the investigator</i>	<b>WB:</b> Yes <b>IP:</b> Yes <b>IHC:</b> 1:50 for 10 min at RT (Formalin/paraffin) <i>Staining of formalin-fixed tissues requires boiling tissue sections in 10 mM citrate, pH 6.0 for 10 min followed by cooling at RT for 20 min.</i>
<b>Predicted m.w:</b>	~132 kDa
<b>Concentration:</b>	See product label
<b>Purification:</b>	Affinity Purified
<b>Format:</b>	PBS, pH 7.4, with BSA and sodium azide
<b>Storage:</b> <i>Shipping conditions may differ from the recommended storage temperature</i>	Store at 4°C
<b>Immunogen:</b>	A synthetic peptide from the Carboxy-terminus of human mGluR1
<b>Related Products:</b>	
SAB-300	Goat anti-Rabbit IgG Polyclonal Antibody, HRP Conjugate
905-414	GluR 2/3 Polyclonal Antibody
905-416	GluR1 Polyclonal Antibody
905-418	GluR4 Polyclonal Antibody

### Background:

Glutamate receptors constitute the principal excitatory neurotransmitter receptors in the brain<sup>1</sup>. Two classes of glutamate receptors exist: ionotropic receptors and metabotropic receptors<sup>1,2</sup>. Ionotropic glutamate receptors are oligomeric complexes of various subunits (GluR1-7, NMDA1-3, KAI-2) which comprise ligand-gated calcium channels. Metabotropic glutamate receptors are G-protein coupled receptors, which when activated signal via phospholipases or adenylyl cyclase, depending on the neuron.

### References:

1. Dingledine, R., *et al.* (1999) *Pharmacol Rev.* **51**, 7-61.
2. Nistri, A., *et al.* (2006) *J Physiol.* **572**, 323-334.



Human brain section stained with mGluR1 Polyclonal Antibody

**FOR RESEARCH USE ONLY; NOT FOR THERAPEUTIC OR DIAGNOSTIC USE**

5777 Hines Drive • Ann Arbor, MI • 48108 | Tel: 800-833-8651 or 800-668-6113 | Fax: 734-668-2793  
[www.assaydesigns.com](http://www.assaydesigns.com) | [orders@assaydesigns.com](mailto:orders@assaydesigns.com) | [technical@assaydesigns.com](mailto:technical@assaydesigns.com)

Last Revised: 9-10-2008