



Anti-Mcl-1, rabbit polyclonal

Catalog Number: 905-460

Quantity: 1.0 mL at 0.2 mg/mL

Introduction: Mcl-1 (Myeloid cell leukemia-1) is a member of the bcl-2 family. The carboxy terminal of Mcl-1 and bcl-2 share significant sequence homology. Expression of Mcl-1 is increased upon exposure of ML-1 cells to various types of DNA damaging agents (e.g. ionizing radiation, ultraviolet radiation, and alkylating drugs) along with increases in GADD45 and Bax and a decrease in bcl-2. Like bcl-2, Mcl-1 has the capacity to promote cell viability under conditions that otherwise cause apoptosis.

Immunogen: A synthetic peptide corresponding to aa 121-139 of human Mcl-1.

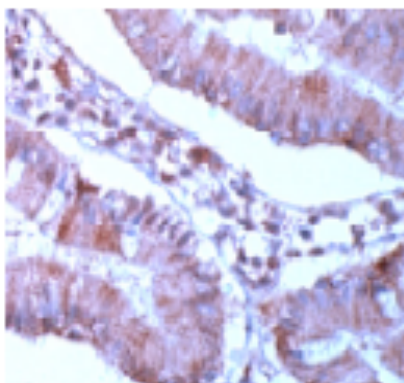
Purification: Affinity Purified

Form: 10 mM PBS, pH 7.4 with BSA and sodium azide.

Storage: Store at 4°C.

Intended Use:

- Immunohistology (Formalin/paraffin)
Working dilution: 1:100 for 10 min at RT
Staining of formalin-fixed tissues requires boiling tissue sections in 10 mM citrate buffer, pH 6.0 for 10 min followed by cooling at RT for 20 min. The optimal dilution for a specific application should be determined by the investigator.



Human small intestine stained with anti-Mcl-1 antibody

Species Reactivity: Human. Others not tested.

For Research Use Only; Not for Therapeutic or Diagnostic Use.